

# THE CROSBY

HW06A2 - BRICK

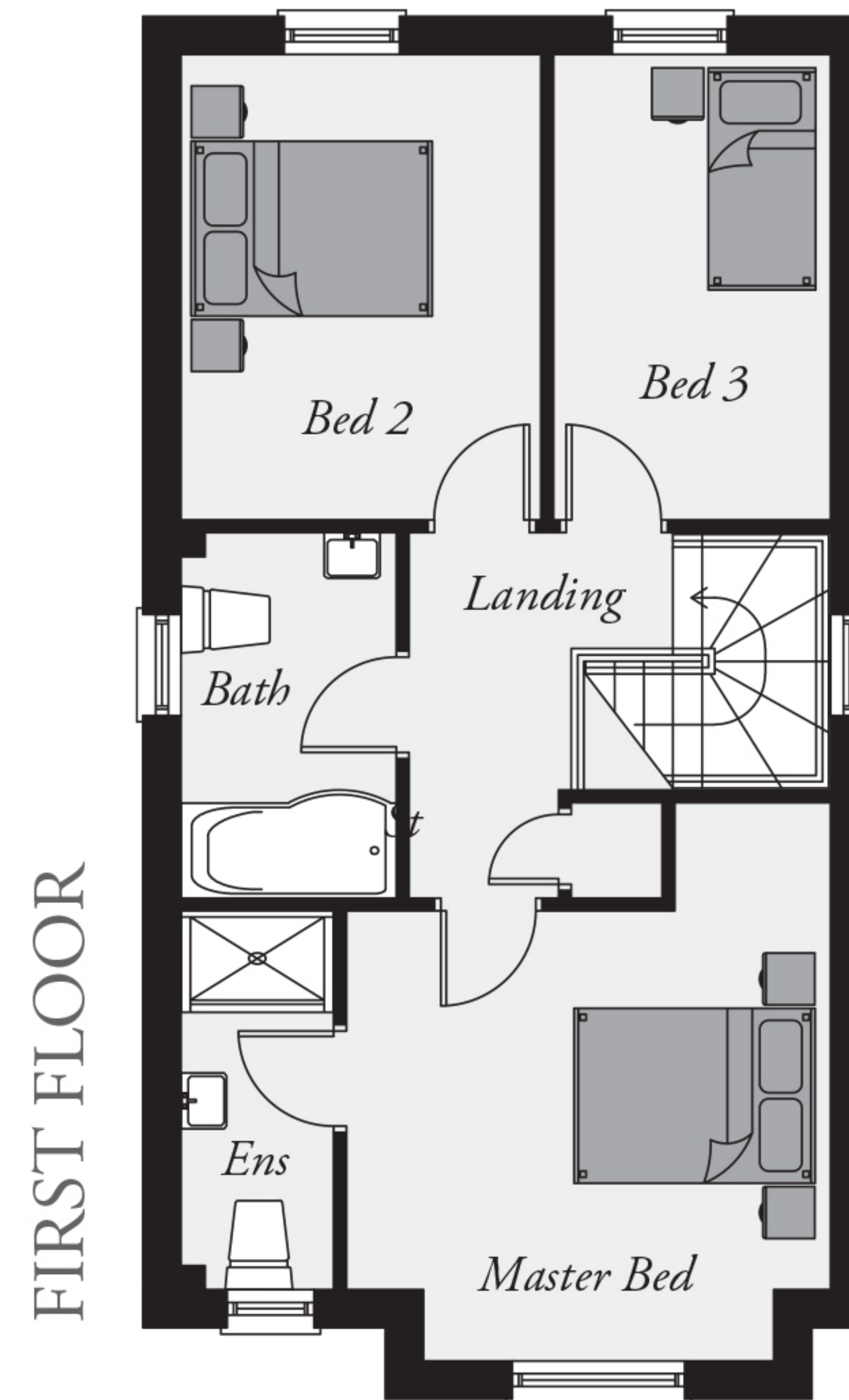
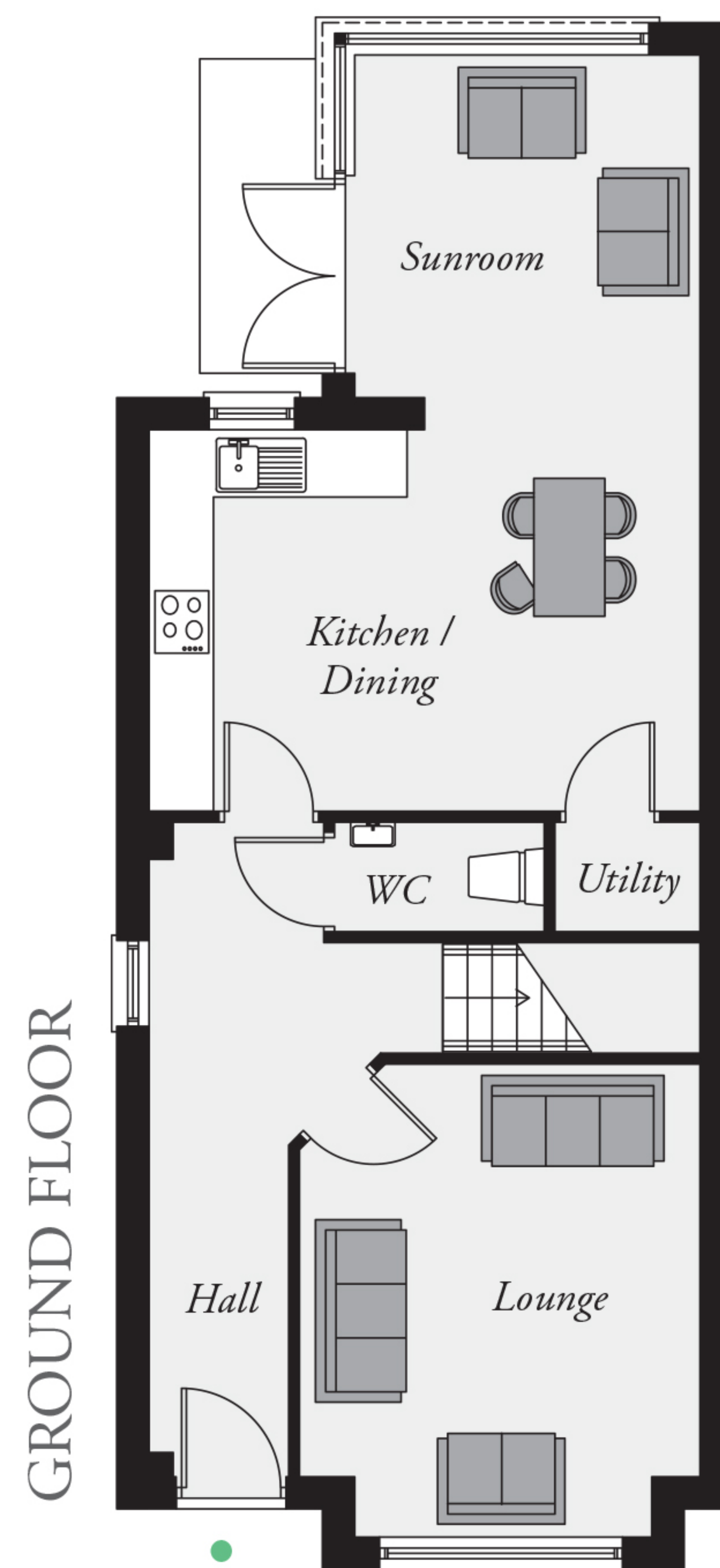


*Computer visual.*



**HELENS WOOD**  
RATHGAEL ROAD ~ BANGOR





## GROUND FLOOR

Entrance Hall (with separate WC)	
Lounge	14'5" x 12'2" (max inc. bay)
Kitchen / Dining	16'9" x 11'7"
Utility Room	4'5" x 3'4"
Sunroom	10'6" x 10'5"

## FIRST FLOOR

Master Bedroom	14'5" x 12'6" (max inc. bay)
Ensuite	
Bedroom 2	12'0" x 9'3"
Bedroom 3	12'0" x 7'2"
Bathroom	

## TOTAL FLOOR AREA

1,092 sq. ft. approx.  
(With optional sunroom 1,202 sq. ft. approx.)



Telephone 028 9146 3721  
[www.reedsrains.co.uk](http://www.reedsrains.co.uk)



NEW HOMES

Telephone 028 9024 4000  
[www.colliersni.com](http://www.colliersni.com)



[www.laganhomes.com](http://www.laganhomes.com)